



Journal of Evolutionary Biology Research

Volume 6 Number 2, June 2014

ISSN 2141-6583



*Academic
Journals*

ABOUT JEBR

The **Journal of Evolutionary Biology Research (JEBR)** (ISSN 2141-6583) is published Monthly (one volume per year) by Academic Journals.

Journal of Evolutionary Biology Research (JEBR) is a peer reviewed journal. The journal is published per article and covers all areas of the subject such as: Mating Systems and Strategies, Trends in Ecology and Evolution, Genetical Evolution of Social Behaviour, Genetic drift and Biased mutation.

Submission of Manuscript

Please read the **Instructions for Authors** before submitting your manuscript. The manuscript files should be given the last name of the first author

[Click here to Submit manuscripts online](#)

If you have any difficulty using the online submission system, kindly submit via this email ajb@academicjournals.org.

With questions or concerns, please contact the Editorial Office at jedr@academicjournals.org.

Editors

Prof. Ricardo de Souza Pereira

School of Pharmacy

Universidade Federal do Amapá - UNIFAP

Campus of Macapá - Macapá - State of Amapá

Brazil.

Prof. Viroj Wiwanitkit

Hainan Medical University

China.

Dr. Fábio Mendonça Diniz

Empresa Brasileira de Pesquisa Agropecuária

(EMBRAPA) Mid-North

Terazina,

Brazil.

Dr. Abdel Gabbarel Tayeb Babiker

University of Sudan

College of Agricultural Studies

Plant Protection Department

Shambat,

Sudan.

Instructions for Author

Electronic submission of manuscripts is strongly encouraged, provided that the text, tables, and figures are included in a single Microsoft Word file (preferably in Arial font).

The **cover letter** should include the corresponding author's full address and telephone/fax numbers and should be in an e-mail message sent to the Editor, with the file, whose name should begin with the first author's surname, as an attachment.

Article Types

Three types of manuscripts may be submitted:

Regular articles: These should describe new and carefully confirmed findings, and experimental procedures should be given in sufficient detail for others to verify the work. The length of a full paper should be the minimum required to describe and interpret the work clearly.

Short Communications: A Short Communication is suitable for recording the results of complete small investigations or giving details of new models or hypotheses, innovative methods, techniques or apparatus. The style of main sections need not conform to that of full-length papers. Short communications are 2 to 4 printed pages (about 6 to 12 manuscript pages) in length.

Reviews: Submissions of reviews and perspectives covering topics of current interest are welcome and encouraged. Reviews should be concise and no longer than 4-6 printed pages (about 12 to 18 manuscript pages). Reviews are also peer-reviewed.

Review Process

All manuscripts are reviewed by an editor and members of the Editorial Board or qualified outside reviewers. Authors cannot nominate reviewers. Only reviewers randomly selected from our database with specialization in the subject area will be contacted to evaluate the manuscripts. The process will be blind review.

Decisions will be made as rapidly as possible, and the journal strives to return reviewers' comments to authors as fast as possible. The editorial board will re-review manuscripts that are accepted pending revision. It is the goal of the AJFS to publish manuscripts within weeks after submission.

Regular articles

All portions of the manuscript must be typed double-spaced and all pages numbered starting from the title page.

The Title should be a brief phrase describing the contents of the paper. The Title Page should include the authors' full names and affiliations, the name of the corresponding author along with phone, fax and E-mail information. Present addresses of authors should appear as a footnote.

The Abstract should be informative and completely self-explanatory, briefly present the topic, state the scope of the experiments, indicate significant data, and point out major findings and conclusions. The Abstract should be 100 to 200 words in length. Complete sentences, active verbs, and the third person should be used, and the abstract should be written in the past tense. Standard nomenclature should be used and abbreviations should be avoided. No literature should be cited.

Following the abstract, about 3 to 10 key words that will provide indexing references should be listed.

A list of non-standard **Abbreviations** should be added. In general, non-standard abbreviations should be used only when the full term is very long and used often. Each abbreviation should be spelled out and introduced in parentheses the first time it is used in the text. Only recommended SI units should be used. Authors should use the solidus presentation (mg/ml). Standard abbreviations (such as ATP and DNA) need not be defined.

The Introduction should provide a clear statement of the problem, the relevant literature on the subject, and the proposed approach or solution. It should be understandable to colleagues from a broad range of scientific disciplines.

Materials and methods should be complete enough to allow experiments to be reproduced. However, only truly new procedures should be described in detail; previously published procedures should be cited, and important modifications of published procedures should be mentioned briefly. Capitalize trade names and include the manufacturer's name and address. Subheadings should be used. Methods in general use need not be described in detail.

Results should be presented with clarity and precision. The results should be written in the past tense when describing findings in the authors' experiments. Previously published findings should be written in the present tense. Results should be explained, but largely without referring to the literature. Discussion, speculation and detailed interpretation of data should not be included in the Results but should be put into the Discussion section.

The Discussion should interpret the findings in view of the results obtained in this and in past studies on this topic. State the conclusions in a few sentences at the end of the paper. The Results and Discussion sections can include subheadings, and when appropriate, both sections can be combined.

The Acknowledgments of people, grants, funds, etc should be brief.

Tables should be kept to a minimum and be designed to be as simple as possible. Tables are to be typed double-spaced throughout, including headings and footnotes. Each table should be on a separate page, numbered consecutively in Arabic numerals and supplied with a heading and a legend. Tables should be self-explanatory without reference to the text. The details of the methods used in the experiments should preferably be described in the legend instead of in the text. The same data should not be presented in both table and graph form or repeated in the text.

Figure legends should be typed in numerical order on a separate sheet. Graphics should be prepared using applications capable of generating high resolution GIF, TIFF, JPEG or Powerpoint before pasting in the Microsoft Word manuscript file. Tables should be prepared in Microsoft Word. Use Arabic numerals to designate figures and upper case letters for their parts (Figure 1). Begin each legend with a title and include sufficient description so that the figure is understandable without reading the text of the manuscript. Information given in legends should not be repeated in the text.

References: In the text, a reference identified by means of an author's name should be followed by the date of the reference in parentheses. When there are more than two authors, only the first author's name should be mentioned, followed by 'et al'. In the event that an author cited has had two or more works published during the same year, the reference, both in the text and in the reference list, should be identified by a lower case letter like 'a' and 'b' after the date to distinguish the works.

Examples:

Abayomi (2000), Agindotan et al. (2003), (Kelebeni, 1983), (Usman and Smith, 1992), (Chege, 1998;

1987a,b; Tijani, 1993,1995), (Kumasi et al., 2001)
References should be listed at the end of the paper in alphabetical order. Articles in preparation or articles submitted for publication, unpublished observations, personal communications, etc. should not be included in the reference list but should only be mentioned in the article text (e.g., A. Kingori, University of Nairobi, Kenya, personal communication). Journal names are abbreviated according to Chemical Abstracts. Authors are fully responsible for the accuracy of the references.

Examples:

Chikere CB, Omoni VT and Chikere BO (2008). Distribution of potential nosocomial pathogens in a hospital environment. *Afr. J. Biotechnol.* 7: 3535-3539.

Moran GJ, Amii RN, Abrahamian FM, Talan DA (2005). Methicillinresistant *Staphylococcus aureus* in community-acquired skin infections. *Emerg. Infect. Dis.* 11: 928-930.

Pitout JDD, Church DL, Gregson DB, Chow BL, McCracken M, Mulvey M, Laupland KB (2007). Molecular epidemiology of CTXM-producing *Escherichia coli* in the Calgary Health Region: emergence of CTX-M-15-producing isolates. *Antimicrob. Agents Chemother.* 51: 1281-1286.

Pelczar JR, Harley JP, Klein DA (1993). *Microbiology: Concepts and Applications.* McGraw-Hill Inc., New York, pp. 591-603.

Short Communications

Short Communications are limited to a maximum of two figures and one table. They should present a complete study that is more limited in scope than is found in full-length papers. The items of manuscript preparation listed above apply to Short Communications with the following differences: (1) Abstracts are limited to 100 words; (2) instead of a separate Materials and Methods section, experimental procedures may be incorporated into Figure Legends and Table footnotes; (3) Results and Discussion should be combined into a single section.

Proofs and Reprints: Electronic proofs will be sent (e-mail attachment) to the corresponding author as a PDF file. Page proofs are considered to be the final version of the manuscript. With the exception of typographical or minor clerical errors, no changes will be made in the manuscript at the proof stage.

Fees and Charges: Authors are required to pay a \$550 handling fee. Publication of an article in the Journal of Evolutionary Biology Research is not contingent upon the author's ability to pay the charges. Neither is acceptance to pay the handling fee a guarantee that the paper will be accepted for publication. Authors may still request (in advance) that the editorial office waive some of the handling fee under special circumstances

Copyright: © 2014, Academic Journals.

All rights Reserved. In accessing this journal, you agree that you will access the contents for your own personal use but not for any commercial use. Any use and or copies of this Journal in whole or in part must include the customary bibliographic citation, including author attribution, date and article title.

Submission of a manuscript implies: that the work described has not been published before (except in the form of an abstract or as part of a published lecture, or thesis) that it is not under consideration for publication elsewhere; that if and when the manuscript is accepted for publication, the authors agree to automatic transfer of the copyright to the publisher.

Disclaimer of Warranties

In no event shall Academic Journals be liable for any special, incidental, indirect, or consequential damages of any kind arising out of or in connection with the use of the articles or other material derived from the JEBR, whether or not advised of the possibility of damage, and on any theory of liability.

This publication is provided "as is" without warranty of any kind, either expressed or implied, including, but not limited to, the implied warranties of merchantability, fitness for a particular purpose, or non-infringement. Descriptions of, or references to, products or publications does not imply endorsement of that product or publication. While every effort is made by Academic Journals to see that no inaccurate or misleading data, opinion or statements appear in this publication, they wish to make it clear that the data and opinions appearing in the articles and advertisements herein are the responsibility of the contributor or advertiser concerned. Academic Journals makes no warranty of any kind, either express or implied, regarding the quality, accuracy, availability, or validity of the data or information in this publication or of any other publication to which it may be linked.

Journal of Evolutionary Biology Research

Table of Contents: Volume 6 Number 2, June 2014

ARTICLES

**Insect Visitation Of Peduncular And Petiolar Extrafloral Nectar Glands On
Castor Bean (*Ricinus Communis* L.) Plants In Southern California**

Taylor Waters, David Chirikian and Victor D. Carmona-Galindo

Short communication

Insect visitation of peduncular and petiolar extrafloral nectar glands on castor bean (*Ricinus communis* L.) plants in Southern California

Taylor Waters, David Chirikian and Victor D. Carmona-Galindo*

Biology Department, Loyola Marymount University, 1 LMU Dr. MS 8220, Los Angeles, CA 90045.

Received 19 February, 2014; Accepted 9 June, 2014

Castor bean (*Ricinus communis* L.) is a myrmecophytic plant species with specialized extrafloral nectar (EFN) glands that serve to attract predatory insects, which in return defend plant-tissues against herbivores. The EFN glands on castor bean plants are located along the leaf petioles as well as on the peduncles of its imperfect (unisexual) flowers. This field-project evaluates the richness, diversity, and species assemblage of insects visiting EFN glands located on (female and male) flower peduncles and leaf petioles on castor bean plants growing in a Southern California coastal landscape. We detected that EFN glands on female-flower peduncles were visited by an insect community that was distinct from that of the other two EFN gland types on castor bean. Additionally, the insects visiting EFN glands on male-flower peduncles more closely resembled those observed visiting EFN glands on leaf petioles. We conclude that the observed differences in the biotic defense of foliar and unisexual floral tissues on castor bean are congruent with the optimal plant-defense strategy of a monoecious pioneer species.

Key words: Ant-plant interactions, monoecious, mutualism, myrmecophyte, plant-defense optimality, sexual dimorphism.

INTRODUCTION

Extrafloral nectar (EFN) glands are specialized plant structures that secrete nectar but are neither part of the flower structure nor associated with pollination (Rico-Gray and Oliveira, 2007). EFN glands are visited by a large variety of predatory insects, such as ants, wasps and parasitoids (Del-Claro et al., 2013), which often serves to increase both the predation and parasitism rates of herbivorous insects feeding on plants bearing EFN glands (Gentry, 2002). However, the primary literature advances at least four hypotheses regarding the

evolutionary role of EFN glands: (1) they help plants excrete excess carbohydrates (Beattie, 1985); (2) they attract predatory insects to defend plant tissues from herbivores (Byk and Del-Claro, 2011); (3) they deter ants from interrupting or interfering with pollination (LeVan et al., 2013); and (4) they discourage ants from tending phloem-feeding insects, such as Mealybugs (Becerra, 1989).

Castor bean (*Ricinus communis* L.) plants are a non-native species component of many habitats in southern

*Corresponding author. E-mail: vcarmona@lmu.edu. Tel: +13103381968.

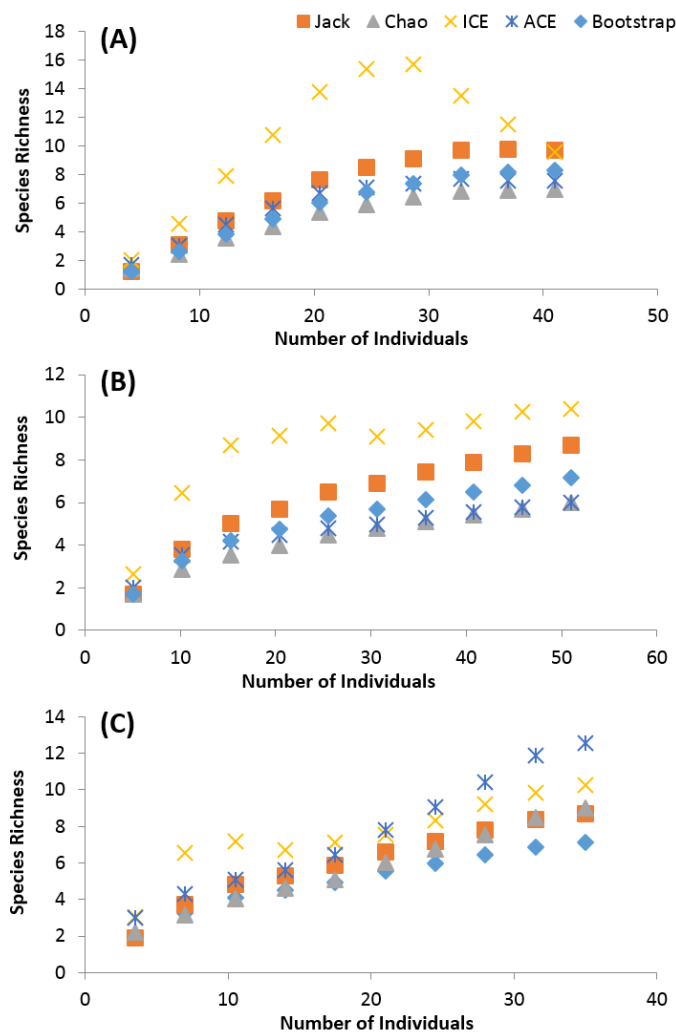


Figure 1. Species richness estimates of insects visiting castor bean EFN glands located on (A) female-flower peduncles, (B) male-flower peduncles, and (C) leaf petioles.

California, and have EFN glands located along its leaf petioles as well as on the peduncles of its imperfect flowers. Additionally, castor bean flowers do not produce nectar rewards (Rizzardo et al., 2012). As such, castor bean plants provide an opportunity to evaluate the role of EFN glands in biotic plant-defense via intraspecific contrasts of the insects attracted to different gland types. The objective of this project was to evaluate the community structure of insects visiting the EFN glands located on female- and male-flower peduncles as well as leaf petioles of castor bean plants in a southern California coastal landscape. We hypothesized that the species richness, diversity and composition of insects visiting castor bean EFN glands would diverge with respect to gland type due to differences in the optimal defense of foliar and unisexual floral tissues in a fast-growing (*r*-

selected) pioneer species.

MATERIALS AND METHODS

We selected 10 flowering castor bean plants growing on a coastal sage scrub habitat north of Loyola Marymount University that is adjacent to Ballona wetlands in Los Angeles, California during November 2013. The castor bean plant is a monoecious species with unisexual flowers that are grouped along an inflorescence. The morphospecies and relative abundance of insect visitors were recorded for 30 min at EFN glands located on peduncles of both female-flowers and male-flowers, as well as on leaf petioles.

Estimates of species richness were calculated based on field data-patterns of insect visitations to each of the three EFN gland types (female-peduncular, male-peduncular and petiolar) using the following multivariate predictors in the software EstimateS (Colwell, 2006): Chao I, ICE, ACE, Jackknife I, and Bootstrap. Shannon-Weiner diversity indices of insect morphospecies visiting the three different EFN gland types were evaluated using a rarefied sub-sampling technique in EstimateS (Colwell, 2006), which generates rarefaction-curves for the diversity index of each gland type that then allows for comparisons based on an equal number of individuals (Gotelli and Colwell, 2001). Evenness of insect morphospecies visiting each of the three EFN gland types was evaluated by means of rank-abundance curves, wherein a slope of zero represents the highest value of species evenness (unity). Species evenness is a measure of equitability among the relative abundances of all the represented species in a given sample and is inversely proportional to species dominance, wherein most individuals in a given sample are represented by only a few species (Mulder et al., 2004). Differences in distribution of taxonomic orders represented by insect visitors across the three EFN gland types were evaluated using a 2-factor (contingency table) Chi-square test.

RESULTS

We observed a total of seven morphospecies of insects ($n=41$ individuals) visiting female-peduncular EFN glands, 6 morphospecies ($n=51$ individuals) visiting male-peduncular EFN glands, and 6 morphospecies ($n=35$ individuals) visiting petiolar EFN glands. Based on multivariate fitting, the estimated species richness of insect visitors to female-peduncular EFN glands ranged between 7-10 species (Figure 1A), visitors to male-peduncular EFN glands ranged between 6-10 species (Figure 1B), and visitors to petiolar EFN glands ranged between 7-13 species (Figure 1C). Rarefaction curves show that, based on $n=35$ insect visitors, diversity was greatest at female-peduncular EFN glands ($H=1.61$) and petiolar EFN glands ($H=1.20$) than at male-peduncular EFN glands ($H=1.00$) (Figure 2). Rank-abundance curves show that female-peduncular EFN glands had the greatest species evenness of insect visitors, while both male-peduncular EFN glands and petiolar EFN glands showed similar patterns of species evenness (Figure 3). The distribution of taxonomic orders of insect visitors differed significantly among the three different EFN gland types ($\chi^2=2452.162$, $df=4$, $p<0.001$) (Figure 4A-C). Hymenopteran visitations were most frequent at both

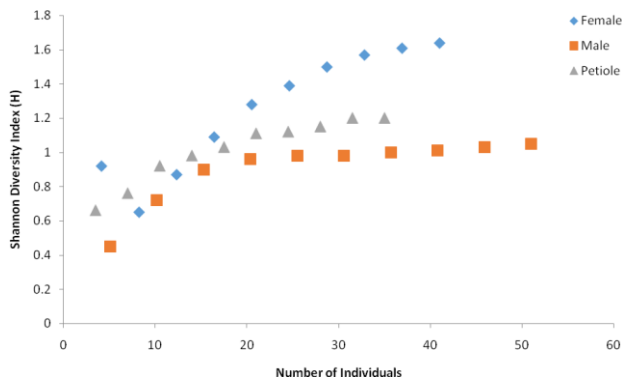


Figure 2. Morphospecies diversity of insects visiting castor bean EFN glands located on female-flower peduncles, male-flower peduncles, and leaf petioles.

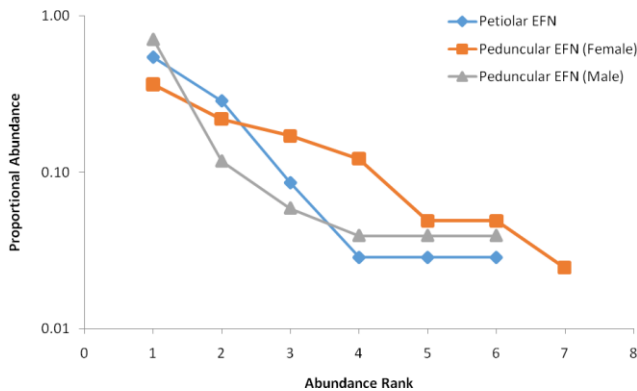


Figure 3. Rank-abundance curves for insect morphospecies visiting castor bean EFN glands located on female-flower peduncles, male-flower peduncles, and leaf petioles.

male-peduncular EFN glands (94%) and petiolar EFN glands (97%). Dipteran visitations were most frequent at female-peduncular EFN glands (22%). Lepidopteran visitations were observed only at female-peduncular (12%) and male-peduncular (2%) EFN glands, but were never observed at petiolar EFN glands.

DISCUSSION

Intraspecific comparisons of the insect communities visiting castor bean EFN glands located on female-flower peduncles, male-flower peduncles, and leaf petioles, showed marked differences in terms of species richness, diversity and composition. Multivariate estimates indicate that we detected between 70-100% of the insect species visiting both female-peduncular and male-peduncular EFN glands, as well as 46-86% of the insect species

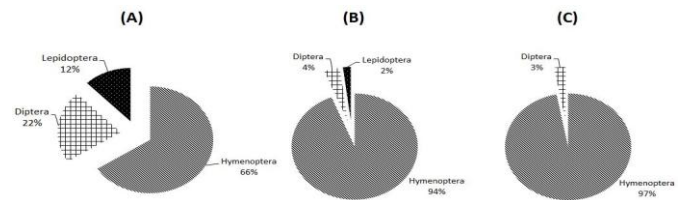


Figure 4. Taxonomic order of insects visiting EFN glands located along (A) female-flower peduncles, (B) male-flower peduncles and (C) leaf petioles of castor bean plants growing in a Southern California coastal landscape.

visiting petiolar EFN glands. The highest species diversity of insects was attracted by female-petiolar EFN glands, while the diversity of insects visiting male-petiolar EFN glands was more comparable to that of the low diversity of insects visiting petiolar EFN glands. Based on the relative slopes of each rank-abundance curve, the species evenness was also highest among insects visiting female-petiolar EFN glands. Both male-peduncular EFN glands and petiolar EFN glands showed a similar lower species evenness, indicating that the majority of insect visiting these EFN glands were dominated by a few species.

Hymenoptera was the most frequent insect order observed visiting all three EFN gland types on castor bean plants, but represented the overwhelming majority (>94%) of insect visits to male-peduncular glands and petiolar glands. However, this pattern varied with species identity and EFN gland type. Honey bees (*Hymenoptera: Apis mellifera* L.) accounted for 71% of the total insect visits to male-peduncular EFN glands and 29% of the visits to petiolar EFN glands, while accounting for 37% of the visits to female-peduncular EFN glands. Honey bees are important in increasing seed yields of the castor bean plant due to its role in pollination (Navatha and Sreedevi, 2012; Rizzardo et al., 2012). However, there is evidence that the castor bean plays an antagonistic role in the relationship, as the pollen from this plant significantly decreases the lifespan of honey bees (de Assis Junior et al., 2011). Insects in the order Diptera were also observed at all three EFN gland types, but visits to female-peduncular EFN glands were almost an order of magnitude higher in terms of frequency to those observed visiting both male-peduncular EFN glands and petiolar EFN glands. While several Diptera species have been documented to pollinate castor bean plants (Mitra, 2010; Navatha and Sreedevi, 2012), herein we further showed a preference for the visitation of female-peduncular EFN glands. Lepidoptera was the only insect order observed to exclusively visit peduncular EFN glands. However, visitations by Lepidoptera to female-peduncular EFN glands were approximately an order of magnitude higher in terms of frequency to visits of male-

peduncular EFN glands.

In terms of the evolutionary role of EFN glands in the attraction of predatory insects (Baker-Méio and Marquis, 2012; Del-Claro et al., 2013), our study shows that biotic-defense strategies can vary intraspecifically with EFN gland type (Bluthgen et al., 2007; Bronstein, 2009). More specifically, female-peduncular EFN glands on castor bean plants are visited by a distinct assemblage of insect species relative to adjacent male-peduncular EFN glands, which instead more closely resembled the species assemblage of insects visiting petiolar EFN glands. The plant-defense strategy observed in castor bean is in line with that of a fast-growing (*r*-selected) monoecious species with unisexual flowers; wherein female-flowers are key to seed production, male-flowers senesce shortly after pollen release (personal observation), and leaf-tissues are short-lived (Coley et al., 1985). However, the number of EFN glands (Goss et al., 2011) and the quality of EFN gland secretions (Carmona-Galindo et al., 2014) may also play an important role in characterizing the variation of biotic-defense optimization in myrmecophytic species (Thompson, 2005).

While studies of plants with unisexual flowers have focused on pollinator behavior (Delph, 1996; Kawagoe and Suzuki, 2002), sexually dimorphic myrmecophytes offer an opportunity to highlight insect behavior with respect to extrafloral rewards on both reproductive and non-reproductive plant tissues (Rose et al., 2013). As such, future studies on sexually dimorphic myrmecophytes should focus on the intraspecific contrasts of reward-chemistry, such as the chemical composition of EFN secretions and proteinaceous food bodies.

REFERENCES

- Baker-Meio B, Marquis R (2012). Context-dependent benefits from ant-dependent benefits from ant-plant mutualism in three sympatric varieties of *Chamaecrista desvauxii*. *J. Ecol.* 100:242-252.
- Beattie AJ (1985). *The Evolutionary Ecology of Ant-Plant Mutualisms*. Cambridge University Press, Cambridge.
- Becerra JXI, Venable DL (1989). Extrafloral Nectaries: A Defense against Ant-homoptera mutualisms? *Oikos* 55(2):276-280.
- Bluthgen N, Menzel F, Hovestadt T, Fiala B, Bluthgen N (2007). Specialization, constraints, and conflicting interests in mutualistic networks. *Cell Press* 17(4):341-346.
- Bronstein J (2009). The evolution of facilitation and mutualism. *Journal of Ecology*. 97(6):1160-1170.
- Byk J, Del-Claro K (2011). Ant-plant interaction in the Neotropical savanna: direct beneficial effects of extrafloral nectar on ant colony fitness. *Population Ecology* 53:327-332.
- Carmona-Galindo V, Morales K, Maser R, Doyle J, Gobrial M (2014). Characterization of sugar diversity in floral and extra-floral nectar from the Coastal Coral Tree (*Erythrina caffra* Thunb.) in Southern California. *Open J. Ecol.* 4(2):23-27.
- Coley PD, Bryant JP, Chapin III FJ (1985). Resource availability and plant herbivore defense. *Science* 230(4728):895-899.
- Colwell R (2006). EstimateS: Statistical estimation of species richness and shared species from samples. Version 8. Persistent URL <url.oacl.org/estimates>.
- De Assis Junior EM, De Mesquita LX, Dos Dantos Fernandes IM, Maracaja PB, Pereira RA, Santos CS, Soto-Blanco B (2011). Toxicity of castor bean (*Ricinus communis*) pollen to honeybees. *Agriculture Ecosystems and Environment* 141:221-223.
- Del-Claro K, Guillermo-Ferreira R, Zardini H, Almeida E, Torezan-Silingardi H (2013). Ants visiting the post-floral secretions of pericarpal nectaries in *Palicourea rigida* (rubiceae) provide protection against leaf herbivores but not against seed parasites. *Sociobiology* 60(3):217-221.
- Delph LF (1996). Flower size dimorphism in plants with unisexual flowers. In: *Floral Biology* (eds D. G. Lloyd & S. C. H. Barrett) pp. 217-237. Chapman & Hall, New York.
- Genry G (2002). Multiple parasitoid visitors to the extrafloral nectaries of *Solanum adherens*. Is *S. adherens* an insectary plant? *Basic Appl. Ecol.* 4(5):405-411.
- Goss K, Moger T, Nielson A, Carmona-Galindo V (2011). Investigation of castor bean investment in extra-floral nectary glands and reproduction. *Bios* 82(2):43-45.
- Gotelli N, Colwell R (2001). Quantifying biodiversity: procedures and pitfalls in measurement and comparison of species richness. *Ecology Letters* 4: 379-391.
- Kawagoe T, Suzuki N (2002). Floral sexual dimorphism and flower choice by pollinators in a nectarless monoecious vine *Akebia quinata* (Lardizabalaceae). *Ecol. Res.* 17(3):295-303.
- LeVan KE, Hung KJ, McCann KR, Ludka JT, Holway DA (2013). Floral visitation by the Argentine ant reduces pollinator visitation and seed set in the coast barrel cactus, *Ferocactus viridescens*. *Oecologia* 174(1):163-171.
- Mitra B (2010). Diversity of Flower-Visiting Flies (Insecta: Diptera) in India and their Role in Pollination. *Records of the Zoological Survey of India* 110(2):95-107.
- Mulder CPH, Bazeley-White E, Dimitrakopoulos PG, Hector A, Scherer-Lorenzen M, Schmid B (2004). Species evenness and productivity in experimental plant communities. *Oikos* 107:50-63.
- Navatha L, Sreedevi K (2012). Insect pollinator diversity and abundance in castor, *Ricinus communis* L. *Current Biotica* 6(2):251-253.
- Rico-Gray V, Oliveira PS (2007). *The Ecology and Evolution of Ant-Plant Interactions*. University of Chicago Press.
- Rizzardo RAG, Milfont MO, Da Silva EMS, Freitas BM (2012). *Apis mellifera* pollination improves agronomic productivity of anemophilous castor bean (*Ricinus communis*). *Anais da Academia Brasileira de Ciências* 84(4):1137-1145.
- Rose C, Carmona-Galindo V, Doyle J, Cano M (2013). Characterization of herbivory in *Cecropia obtusifolia* Bertol., a dioecious myrmecophyte from a lowland rainforest in Costa Rica. *Mesoamericana* 17(1):57-60.
- Thompson JN (2005). *The geographic mosaic of coevolution*. University of Chicago Press.



Journal of Evolutionary Biology Research

Related Journals Published by Academic Journals

- *International Journal Of Genetics And Molecular Biology*
- *Journal Of Cell And Animal Biology*
- *Journal Of Developmental Biology And Tissue Engineering*
- *Journal Of Biophysics And Structural Biology*
- *International Journal Of Biodiversity And Conservation*
- *Journal Of Ecology And The Natural Environment*

academicJournals